

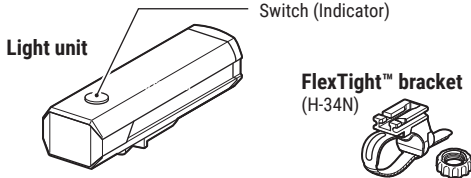


RECHARGEABLE HEADLIGHT AMPP900™

MODEL: HL-EL089RC

Before using the light, read this manual thoroughly and keep it for future reference. Do not use the product in any application or method not described in this manual.

Design Pat. Pending
Copyright © 2023 CATEYE Co., Ltd.
HLEL089RC-230810 1.1



CATEYE will continue to contribute to society by creating new values in "Safety," "Health" and "Environment". CATEYE supports the Sustainable Development Goals movement proposed by the United Nations. (www.cateye.com/intl/company/sdgs/)

The USB cable is not included in the package because CATEYE is committed to making environmentally friendly and resource-saving products.

⚠️ WARNING!!! (Risk of death; Prevention of accidents)

- Do not look directly at the light source. In addition, when mounting the light unit, ensure that the light would not dazzle other road users.
- Before riding, check that the light unit is securely attached to the bracket, turns on properly, and is not blocked in any way.
- Always pay attention to the remaining battery power by checking the indicator periodically while using the light.
- Do not disassemble or modify the light or any of the included items.

⚠️ CAUTION! (Prevention of injury, damage, or property damage)

- Be sure to tighten the dial by hand. When you tighten it too hard with a tool, the screw thread may be stripped.
- Check the dial and screw on the bracket periodically, and use them without any loosening.
- Operating the light while riding is dangerous. Always ride safely.
- Note that the light becomes hot while illuminated. Do not block the lens or cover the light.
- Due to the variability of LEDs, the color and brightness may differ even between devices with the same model number.
- Do not place it within children's reach.
- Carrying a spare headlight is recommended in case the battery runs out.
- When used with a cyclocomputer, attach the headlight as far away from the cyclocomputer as possible, as it may affect measurement.
- This device is rated IPX4 based on JIS C0920. Do not immerse the device in water. Doing so may cause a malfunction. Wipe off any moisture after using the device in rainy weather.
- Do not subject the light to strong vibrations, impacts, or excessive force. Discontinue use if any abnormality occurs.
- Do not charge or use the battery at any voltage or polarity other than that specified. Do not short-circuit the battery.
- Do not drop the light into a fire or heat the light.
- If the light unit or parts become dirty with mud, etc., clean with a soft cloth which is moistened with mild soap. Never apply paint thinner, benzene or alcohol; damage will result.

⚠️ LITHIUM-ION BATTERIES

Recharge the battery for first time use or after long period of storage: The voltage of the battery may drop due to self-discharge during long period of storage. Always fully charge the battery before use.

Cautions for charging and usage:

- Please be sure that no dust or other foreign objects are attached to the plug of the USB cable before charging.
- Do not apply a load to the connector port by hanging the light unit during charging.
- Do not subject the light to vibrations while charging.
- Once charging is completed, be sure to disconnect the USB cable from the charging port.
- After charging is complete, securely attach the charging port cover to ensure waterproofing before riding.
- Charging time is approximate values, and will vary depending on the environmental and usage conditions.
- Charging, discharging, and storing in high temperatures will cause the rechargeable battery to deteriorate faster. Do not place the light inside a vehicle or near a heater. Make sure to charge only when the ambient temperature is between 5 and 40°C.
- If the illumination time is significantly reduced even after proper charging, the rechargeable battery may be nearing the end of its service life.

Cautions on storage:

- If the device will not be used for a long period of time, store it in a location that is not too hot or too humid.
- Charge the battery for about 30 minutes every 6 months.

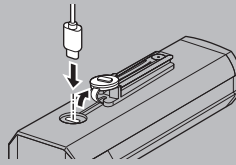
Cautions for dispose:

When disposing the light unit, please do so in accordance with your local regulations.

Required Items

Please prepare a USB cable (Type-C) that can be used for charging (sold separately) before using this product.

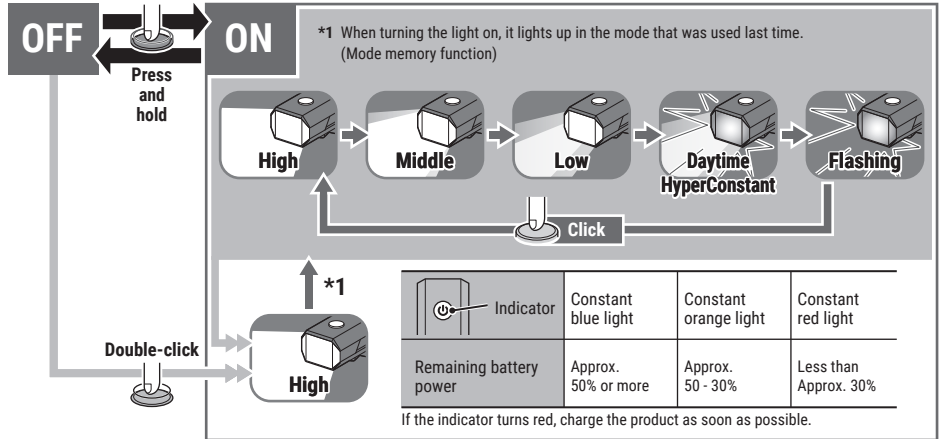
⚠️ Before using the product, refer to the "LITHIUM-ION BATTERIES" section and charge the battery.



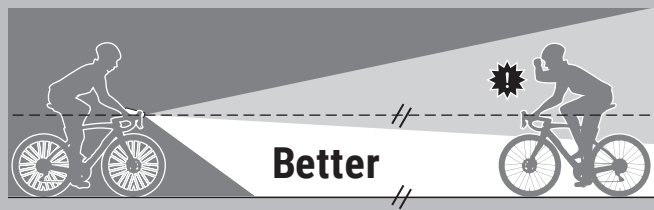
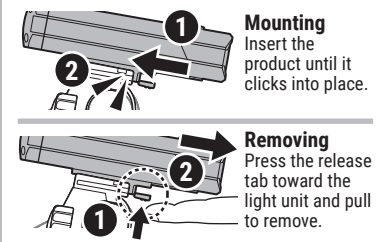
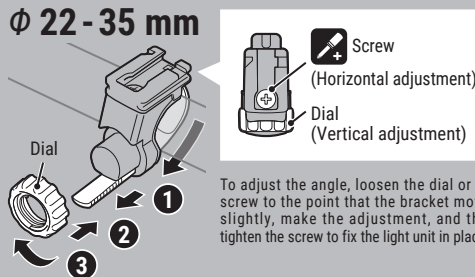
Indicator		
	Constant red light	Charging
	Off	Charging is completed

Charging time
Approx.

4h (1A) - 8h (0.5A)



How to mount to a bicycle



Standard accessories

- 5338827N (H-34N)**
FlexTight™ bracket
- 5340910 (H-37AL)**
Bracket Spacer

Use only genuine components to prevent accidents and malfunctions.

Optional accessories

- 5342550 (Type-A ↔ Type-C)**
USB cable
- 5341831N**
Helmet mount
- 5342440 (CFB-100)**
Center fork bracket
- 1604110 (OF-200)**
Out-front bracket 2

SPECIFICATIONS

Light source	LED x 1
Battery	Li-ion 3.7 V - 3000 mAh
Charge terminal	USB Type-C
Operating time	High : Approx. 2 hours
	Middle : Approx. 3 hours
	Low : Approx. 5 hours
	Daytime HyperConstant : Approx. 4 hours
	Flashing : Approx. 35 hours
	* Approximate average runtime at 68°F (20°C). Approx. 4 (1 A) - 8 (0.5 A) hours
Charging time	5 V
Charge voltage	Charging : 41°F - 104°F (5°C - 40°C)
Temperature range	Operating : 14°F - 104°F (-10°C - 40°C)
Waterproof	IPX4
Recharge / discharge number of times	About 300 times (until the rated capacity drops to 70%)
Dimensions	1-17/64" x 4-1/64" x 1-19/64" (32 x 102 x 33 mm)
Weight	5 oz (142 g)

* This product is developed assuming use by bicycle.
* The specifications and design are subject to change without notice.

LIMITED WARRANTY

2-year Warranty: Light unit only (excludes battery deterioration)

CatEye products are warranted to be free of defects from materials and workmanship for a period of 2 years from original purchase. If the product fails to work during normal use, CatEye will repair or replace the defect at no charge. Service must be performed by CatEye or an authorized retailer. To return the product, pack it carefully and enclose the warranty certificate (proof of purchase) with instruction for repair. Please write or type your name and address clearly on the warranty certificate. Insurance, handling and transportation charges to CatEye shall be borne by person desiring service. For UK and REPUBLIC OF IRELAND consumers, please return to the place of purchase. This does not affect your statutory rights.

CATEYE CO., LTD.

2-8-25, KUWAZU, HIGASHI SUMIYOSHI-KU, OSAKA, JAPAN 546-0041
For inquiries, please visit <https://cateye.com/intl/contact/>

[For US Customers]

CATEYE AMERICA, INC.
Please visit <https://www.cateyeamerica.com/contact-us/>
Toll Free : 800.5.CATEYE